

wissner-
bosserhoff

mattresses

Furniture for an ambience worth living in





“The average give the world its durability.
The unusual, its value.”

Oscar Wilde

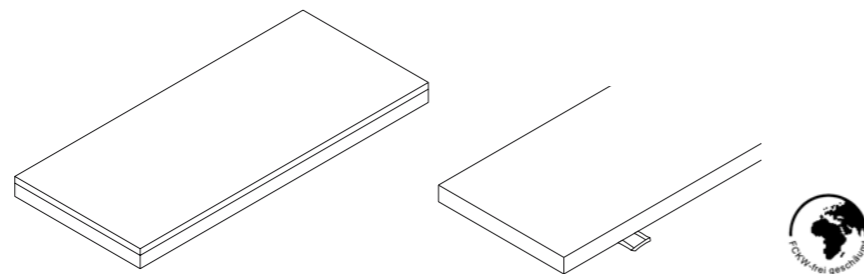
Professional bedding and lying is an important prerequisite for the well-being of ill people, particularly when you consider that the frequency of bedsores in hospital lies at around 10%. The requirement for optimal lying is provided by an innovative, functional hospital bed. To supplement this, wissnerbosserhoff is offering high-quality mattress systems adapted to physical conditions, the demands of comfort, and to the bedsores risk of patients.

mattresses



mattress core/cover

Mattress core The use of open-pore cold foam ensures better aeration. Depending on the type of mattress, there are also additional venting channels on the surface (CubiMatt) or in the inside of the mattress (MicroMatt, ProphyMatt II).



Patients who spend a lot of time sitting or lying in bed need a combination of products that is tailor-made to suit their needs. This starts with the selection of the right type of bed as the decubitus risk is drastically reduced when the bed has a double retraction function for the back and leg rests. The bed should also be fitted with a top quality mattress including a stretch cover, low CPP-value and excellent aeration properties.

General properties of the cover Mattress covers from wissner-bosserhoff stand out thanks to their one-sided or double-sided resistance to urine and disinfectants, and the use of materials that are breathable and which allow steam to pass through. All covers are free of pollutants in compliance with the Eco-TEX standard.

Cleaning The mattress covers can be washed at temperatures up to 60° and/or 95° degrees and can be machine dried. Not only can they be disinfected, all waterproof covers are also highly resistant to bacteria, viruses, fungi and mites.

Extra properties The variants of the Universal, MicroMatt and ViskoMatt mattresses, with the Aqua and Aqua Plus covers, as well as the ProphyMatt mattress, are flame-resistant in accordance with BS7175 sec. 3 crib 5.



Tumble dryer



Washable



CPP-analysis



When people are bedridden for long periods of time, the mattress cover is subject to more wear than usual and therefore needs to have certain properties. These not only include practical factors such as its suitability for machine washing and drying but also e.g. a high resistance to urine and disinfectants as well as bacteria and viruses.

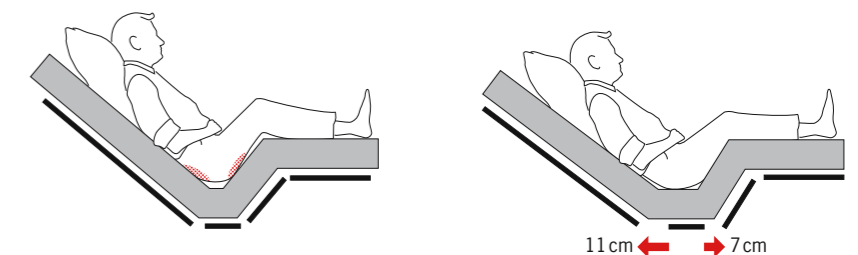
bedsore prevention



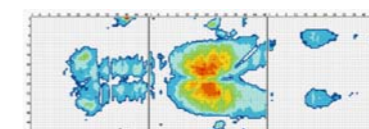
Lying and sitting for a long time without changing position, as well as high-pressure loads that are accompanied by strong shearing forces, are reasons for the occurrence of bedsores. The lack of movement can lead to painful bedsores. The dual retraction – a quality feature typical of wissner-bosserhoff – addresses this situation. This technical prevention can help in significantly reducing the occurrence of bedsores. Because with the simultaneous adjustment of back and leg rest, the double retraction provides a total of 18cm extra space. The advantages for people and for the materials are obvious: The patient has sufficient room in the pelvic area. A change in position to a comfortable sitting posture is no longer necessary – so there is no annoying rubbing. The risk of bedsores is reduced. Mattresses and covers will show their thanks by lasting longer. The extra space gained through the double retraction spares the material. Lower tensions when adjusting the back and leg rests reduce the wear and tear.



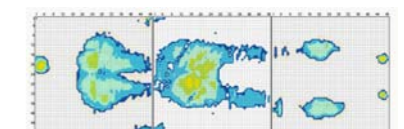
Expert standards in nursing care wissner-bosserhoff nursing home beds are presented on the same level as the expert standards for fall and bed-sore prevention where the required reduction in friction and shearing forces movement for the patient is concerned (cf. Expert standard Bedsore prophylaxis dated April 2002, Chap. 3.5, S2/P2) – particularly through the integrated dual retraction of back and leg rest.



Standard mattress



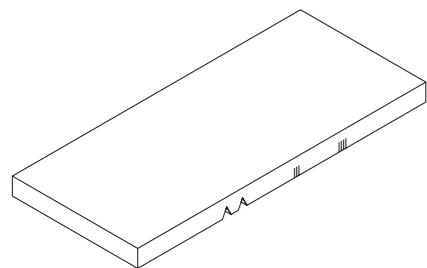
Double retraction



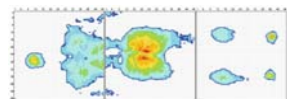
universal mattress

The universal mattresses from wissner-bosserhoff are particularly suitable for relatively mobile residents who are not at risk of suffering from decubitus as they do not need to remain in bed all the time.

01 Universal mattress



Polyether foam RG 40, lower side with special units for bending the knees and DBFK-back rest.
Variant: Polyether foam RG 35 with Aqua or Aqua Plus covers in mint-green, all flame-resistant in accordance with BS7175 sec. 3 crib 5



Cover: Terry cloth, zippered on two sides, colour beige.

Max. allowed weight of patient: 150 kg.
Application areas: Standard care

Risk 0



Cover: Aqua, damp-repellent with PU/PES coating (155g/m²), corresponds to the flame resistance standard BS 7175, colour white.

Max. allowed weight of patient: 150 kg.
Application areas: Standard care

Risk 0



Cover: Aqua Plus, cover mint-green, damp-repellent with PU/PES coating (190g/m²), bi-elastic, corresponds to the flame resistance standard BS 7175.

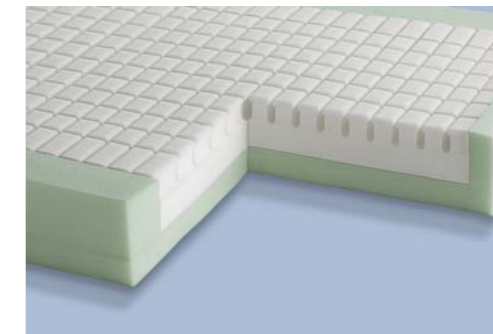
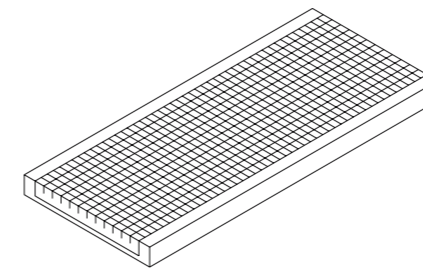
Max. allowed weight of patient: 150 kg.
Application areas: Standard care

Risk I - II

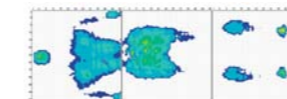
comfort mattresses

It is important that not only the health aspects but also the comfort of the mattress are taken into consideration for people who are forced to spend longer periods in bed due to frailty or illness. The right choice of mattress means that the surface of the skin is pleasantly stimulated thus ensuring a positive sense of well-being.

02 CubiMatt



Cold foam mattress RG 40-45, with edge zone reinforcement, surface with ergonomically adapted special contour in a cubic system for improved point elasticity.



Max. allowed weight of patient: 120 kg.
Application areas: Comfort and prevention

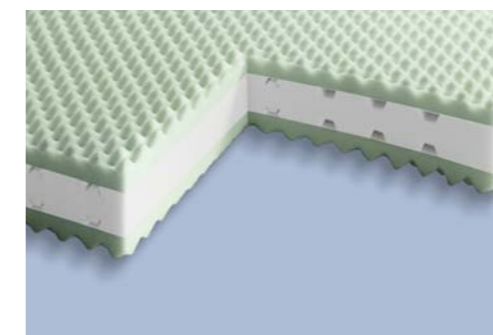
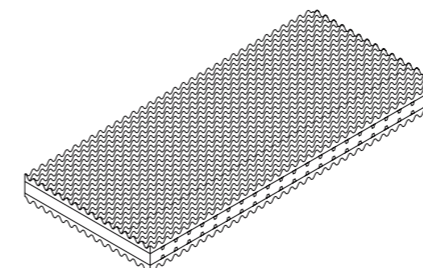
CPP 2,8

Risk I

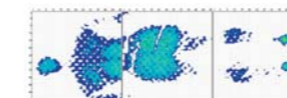


Cover: Liquid wonder, damp-repellant and with active breathing, with high-tech fibres and PUR membrane, corresponds to flame-resistance standard BS 7175, colour beige.

03 MicroMatt



3-layer cold foam mattress, RG 50/40/50 airing channels, surface with massage points. Variant: flame-resistant in accordance with BS7175 sec. 3 crib 5



Max. allowed weight of patient: 120 kg.
Application areas: Comfort and prevention

CPP 2

Risk I - II

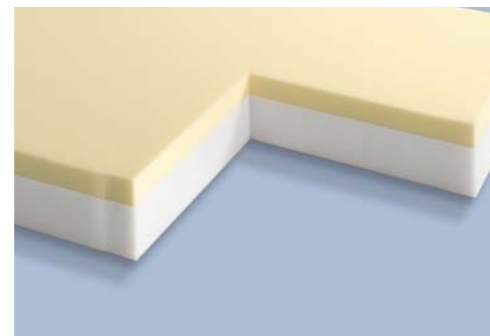
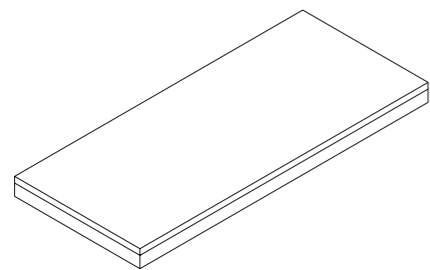


With **reversible jersey cover**: one half is Aqua Plus and one half jersey, i.e. elastic woven material made of hygienic hose fabric, light blue, highly breathable and suitable for boil washing (not water-proof).

prophylaxis mattresses

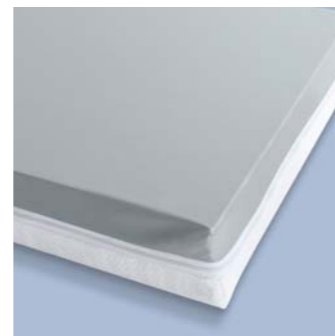
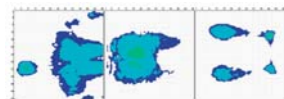
Those people, who have a high risk of decubitus because they spend a long time in bed, will profit from reliable preventative measures. For this reason, the prophylaxis mattresses from wissner-bosserhoff provide optimum pressure distribution values for all body parts that are in contact with the mattress thereby significantly reducing the risk of decubitus.

04 ViskoMatt



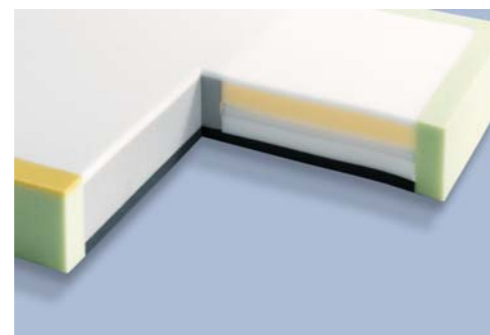
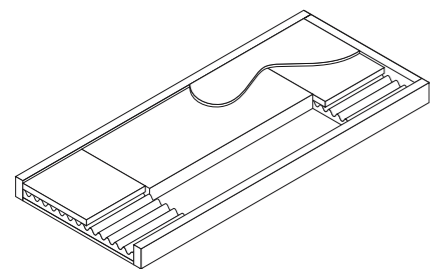
2-layer mattress, top layer of 4cm visco-elastic thermal foam, lower layer of 8cm cold foam RG 40. variant: flame-resistant in accordance with BS7175 sec. 3 crib 5

Max. allowed weight of patient: 150 kg.
Application areas: Comfort and prevention
CPP 1,6
Risk II



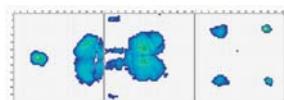
Reversible cover Cambio: one half is Aqua Plus and one half medical double cloth, i.e. made of a triple-layered material, white, highly breathable and suitable for boil washing (not water-proof), zippered on four sides.

05 ProphyMatt



Professional hybrid mattress, with reinforced edges, surface with visco-elastic foam, head and heels area consisting of a visco and cold foam compound.

Max. allowed weight of patient: 130 kg.
Application areas: Comfort and prevention
CPP 0,9
Risk III-IV

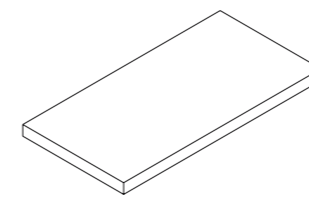


Cover: Lintex, dark blue, damp-repellant with PU/PES coating (185g/m²), bi-elastic (top side), with carrying flaps, corresponds to flame resistance standard BS 7175, top side colour dark blue, sides beige.

mattresses for children's beds

Our mattresses for children's beds were developed specially for the relaxed and health-promoting sleep of children. Carefully selected materials guarantee a high degree of hygiene.

06 Mattress for tom I and tom II

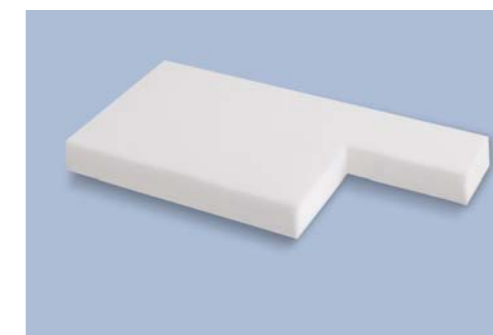
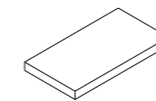


Polyether foam RG 40
Deployment: Paediatrics



Cover: Aqua, damp-repellent with PU/PES coating (155g/m²), corresponds to the flame resistance standard BS 7175, colour white.

07 Mattress for rooming in



Polyether foam RG 25
Deployment: Maternity/Baby Units

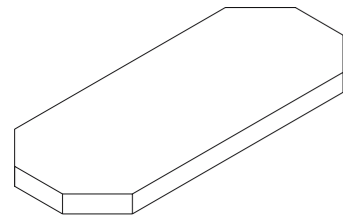


Cover: Aqua, damp-repellent with PU/PES coating (155g/m²), corresponds to the flame resistance standard BS 7175, colour white.

mattresses for stretcher sprint

The unique mattress system for the Stretcher sprint comes in three different variants. The sprint plus mattress simplifies patient transfer since it contains extendable pads that close the gap between stretcher and operating table, hospital bed or X-ray table. The visco-elastic layer of the sprint comfort mattress ensures comfortable lying over longer periods.

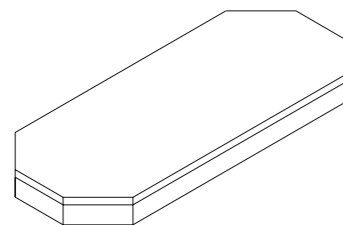
09 sprint



Polyurethane cold foam mattress (CMHR), RG 43
Deployment: Out-patient department/Acute care

Cover: Lintex, damp-repellant with PU/PES coating (185g/m²), bi-elastic, antistatic, corresponds to flame resistance standard BS 7175, colour black

10 sprint comfort

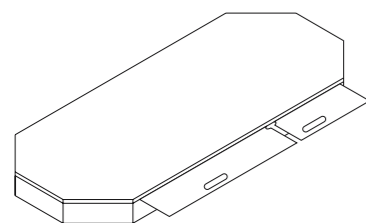


2-layer mattress, top layer of 2cm visco-elastic thermal foam, lower layer of 8cm polyurethane cold foam (CMHR) RG 40

Deployment: Out-patient department/Acute care

Cover: Lintex, damp-repellant with PU/PES coating (185g/m²), bi-elastic, antistatic, corresponds to flame resistance standard BS 7175, colour black

11 sprint plus



Polyurethane cold foam mattress RG 35-40 with patient transfer pads that can be extended sideways

Deployment: Out-patient department/Acute care

Cover: Lintex, damp-repellant with PU/PES coating (185g/m²), bi-elastic, antistatic, corresponds to flame resistance standard BS 7175, colour black

posture aids

In addition to the right choice of mattress, the correct posture in bed will prevent any further complications and help the patient's convalescence; the risk of decubitus to those parts of the body lying freely or positioned on soft surfaces is reduced. The right positioning of posture aids helps to support the pelvis and relieve lumbar strain.

01 Universal posture pillow 50-0144 For individual postures, e.g. for beneath the calves or for supporting the paralysed arm of a hemiplegia patient.

02 Cylinder pillows 50-0145 For individual positioning of the patient, e.g. as a support beneath the knees or between the knees when the patient is lying on his side.

03 Posture rolls for patients lying on their sides 50-0146 The roll supports the body when lying in a 30° side position; 30° hip and knee bed incorporated to facilitate easier positioning of the patient.

04 Ring pillow 50-0147 This element securely supports the patient's head regardless of whether the patient is lying on his back or side.

05 Half-moon pillow 50-0148 Can be used flexibly, e.g. behind the spine or behind the knees whilst also supporting the arms at the same time.

06 Heel position 50-0149 For comfortable free positioning of the heels.

07 Complete set (6 posture pillows + bag) 50-0150 One posture pillow of each of the above-mentioned types and a practical zippered storage bag.

08 For people who perspire heavily, or if there is direct skin contact, we recommend cotton covers available for cushions 01 to 05.



01



02



03



04



05



06

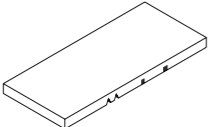
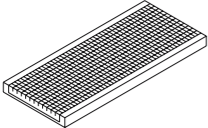
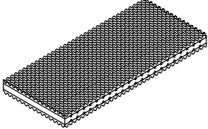
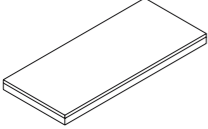
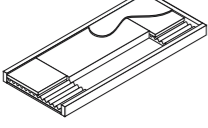


07



08

product range

Mattresses	Area	CPP	Risk	Cover
01 Universal mattress, 50-0095 (Frottée and Jersey covers) 50-0084 (other covers) 50-0187* 50-0180** 50-0188*, ** 	Standard care max. allowed weight of patient: 150 kg		Risiko 0	Frottée beige Jersey blue Aqua white Aqua Plus mint-green Liquid Wonder beige Cambio reversable cover white/mint-green Jersey reversable cover white/blue
02 CubiMatt 50-0205 	Comfort and prevention max. allowed weight of patient: 120 kg	CCP 2,8	Risiko I	Frottée beige Jersey blue Aqua white Aqua Plus mint-green Liquid Wonder beige Cambio reversable cover white/mint-green Jersey reversable cover white/blue
03 MicroMatt 50-0123 50-0181** 	Comfort and prevention max. allowed weight of patient: 120 kg	CCP 2,0	Risiko I - II	Frottée beige Jersey blue Aqua white Aqua Plus mint-green Liquid Wonder beige Cambio reversable cover white/mint-green Jersey reversable cover white/blue
04 ViskoMatt 50-0085 50-0166* 50-0182** 50-0189*, ** 	Preventing decubitus max. allowed weight of patient: 150 kg	CCP 1,6	Risiko II	Frottée beige Jersey blue Aqua white Aqua Plus mint-green Liquid Wonder beige Cambio reversable cover white/mint-green Jersey reversable cover white/blue
05 ProphyMatt II 50-0126 	Preventing decubitus max. allowed weight of patient: 130 kg	CCP 0,9	Risiko III - IV	Lintex, with handle loops

Mattresses	Area	Dimensions	Risk	Cover
01 Mattress for rooming in 40-0004 	Maternity/Baby Units	65 x 35 x 5 cm	Risk 0	Aqua white
02 Mattress for tom I 40-0009 	Paediatrics	137 x 70 x 7 cm	Risk 0	Aqua white
03 tom II 40-0010 	Paediatrics	112 x 55 x 7 cm	Risk 0	Aqua white
04 sprint 20-0298 	Out-patient department/ Acute care	192 x 61 x 6 cm	Risk 0	Lintex antistatic
05 sprint comfort 20-0300 	Out-patient department/ Acute care	192 x 61 x 10 cm	Risk 0	Lintex antistatic
06 sprint plus 20-0299 	Out-patient department/ Acute care	192 x 61 x 6 cm	Risk 0	Lintex antistatic

* suitable for the hospital bed "image"

** flame-resistant in accordance with BS7175 sec. 3 crib 5

accessories

Mattress covers

Cover	Aqua	Aqua Plus	Cambio	Jersey Aqua
Mod.No.:	50-0102/50-0191*	50-0096/50-0192*	50-0103/50-0194*	50-0140/50-0195*
Colour	white	mint green	mint green/white	light blue/white
Damp protection	yes	yes	on one half	on one half
Area weight	155 g/m ²	190 g/m ²	FS*-side 190 g/m ²	FS*-side 155 g/m ²
Elasticity	uni-elastic	bi-elastic	FS*-side bi-elastic	FS*-side uni-elastic
Washable at	95°	95°	95°	95°
Zip	2 sides	2 sides	4 sides	4 sides
Dimensions (cm)	200 x 87 x 12 208 x 87 x 12 200 x 80 x 12	200 x 87 x 12 208 x 87 x 12 200 x 80 x 12	200 x 87 x 12 208 x 87 x 12 200 x 80 x 12	200 x 87 x 12 208 x 87 x 12 200 x 80 x 12

Cover	Lintex	Frottée stretch	Liquid Wonder	Jersey
Mod.No.:	50-0139	50-0101	50-0176/50-0193*	50-0183/50-0190*
Colour	dark blue	beige	beige	light blue
Damp protection	yes	no	yes	no
Area weight	Top side 185 g/m ²	180 g/m ²	190 g/m ²	180 g/m ²
Elasticity	Top side bi-elastic	bi-elastic	elastic	elastic
Washable at	70°	95°	60°	95°
Zip	4 sides	2 sides	2 sides	2 sides
Dimensions (cm)	200 x 86 x 12 208 x 86 x 12 200 x 80 x 12	200 x 87 x 12 208 x 87 x 12 200 x 80 x 12	200 x 87 x 12 208 x 87 x 12 200 x 80 x 12	200 x 87 x 12 208 x 87 x 12 200 x 80 x 12

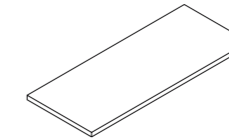
*suitable for the hospital bed "image"

Posture aids

01 Universal/posture pillow 50-0144 Terry cloth cover 50-0157	02 Cylinder pillows 50-0145 Terry cloth cover 50-0161	03 Posture roll 50-0146 Terry cloth cover 50-0159	04 Ring pillow 50-0146 Terry cloth cover 50-0160
05 Half-moon pillow 50-0148 Terry cloth cover 50-0158	06 Free positioning of heels 50-0149	07 Complete set (6 posture pillow + bag) 50-0150	

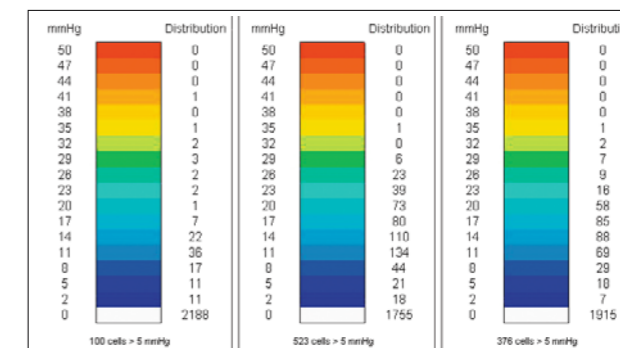
Accessories

01 Extension cushion 50-0075	02 TheraSub Underlay for alternating pressure systems 50-0089
--	---



CPP analysis

CPP – the critical pressure points – is the measure used to attest the suitability of an anti-decubitus mattress as a preventative or therapeutic measure for various decubitus risk groups. It determines the percentage of potentially hazardous decubitus pressure points on the surface of the mattress by calculating the number of all pressure points greater than 32 mmHg in relation to the total number of measured pressure points. The lower the CPP, the better the pressure distribution within the mattress and the higher the preventative or therapeutic suitability for decubitus patients.



Concept and design by sieger design **Print** msp druck und medien gmbh, Mundersbach **Edition** 1. edition, 06/2007 **Ref.** 97-0318 Slight variations in colours are possible. Technical amendments reserved.



wissner- bosserhoff

Furniture for an ambience worth living in

wissner-bosserhoff GmbH
Hauptstraße 4-6
D-58739 Wickede (Ruhr)
Telefon: +49 (0) 23 77 / 784-0
Telefax: +49 (0) 23 77 / 784-163
E-Mail: info@wi-bo.de

www.wi-bo.de

