



wissner-  
bosserhoff

mattresses

Furniture for an ambience worth living in



“Everyone wants to grow old,  
but nobody wants to be old.”

*Arthur Schopenhauer*

People in care facilities are usually restricted as far as mobility is concerned and forced to spend a large amount of time in their beds; it is therefore hardly surprising that around 16% of all long-term patients suffer from decubitus. The right, comfortable position is extremely important in order to keep the patients in the best possible state of health. In addition to functional and innovative orthopedic beds, wissner-bosserhoff also supplies top quality mattress systems that not only meet comfort requirements but also extensively cater to the physical situation of the patient and his decubitus risk.

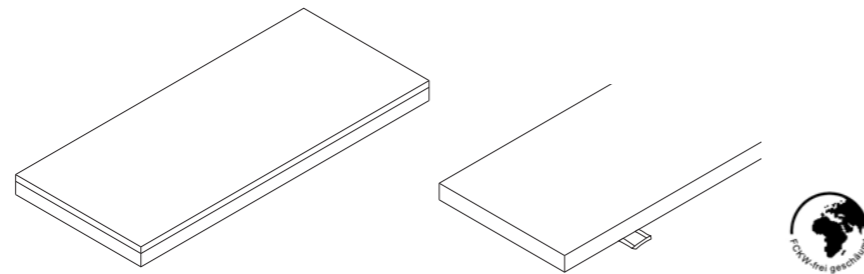
# mattresses



# mattress core/cover

**Patients who spend a lot of time sitting or lying in bed** need a combination of products that is tailor-made to suit their needs. This starts with the selection of the right type of bed as the decubitus risk is drastically reduced when the bed has a double retraction function for the back and leg rests. The bed should also be fitted with a top quality mattress including a stretch cover, low CPP-value and excellent aeration properties.

**Mattress core** The use of open-pore cold foam ensures better aeration. Depending on the type of mattress, there are also additional venting channels on the surface (CubiMatt II) or in the inside of the mattress (MicroMatt, ProphyMatt II).



**General properties of the cover** Mattress covers from wissner-bosserhoff stand out thanks to their one-sided or double-sided resistance to urine and disinfectants, and the use of materials that are breathable and which allow steam to pass through. All covers are free of pollutants in compliance with the Eco-Tex standard. **Cleaning** The mattress covers can be washed at temperatures up to 70° and/or 90° degrees and can be machine dried. Not only can they be disinfected, all waterproof covers are also highly resistant to bacteria, viruses, fungi and mites.



**When people are bedridden for long periods of time**, the mattress cover is subject to more wear than usual and therefore needs to have certain properties. These not only include practical factors such as its suitability for machine washing and drying but also e.g. a high resistance to urine and disinfectants as well as bacteria and viruses.

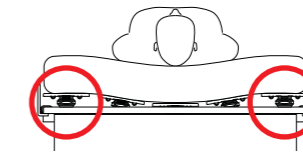
# mattress surfaces

that help prevent decubitus

## 1

**Comfortable mattresses** The luxury spring technology ensures an additional soft posture options and laying comfort – even on a 12cm mattress. The edge zone elements have more internal springs and serve as orientation zones when sitting or sleeping.

**Preventing decubitus** The comfort mattress with its excellent soft posture properties is an effective prevention against decubitus. The mattress partitions can be removed for easy cleaning.

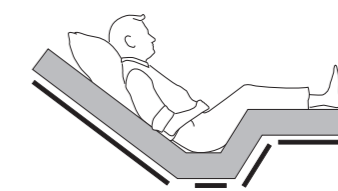
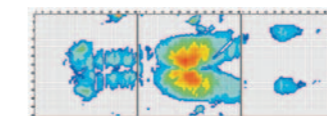


## 2

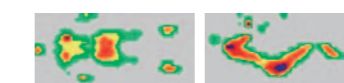
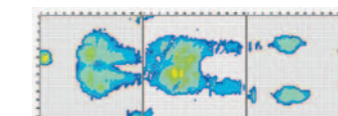
**Double retraction** The double retracting function of back and leg rests reduces friction and gravitational pressure in the pelvic area thereby significantly reducing the risk of decubitus.



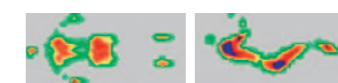
Standard mattress



Double retraction



Comfort mattress



Grid wire mattress

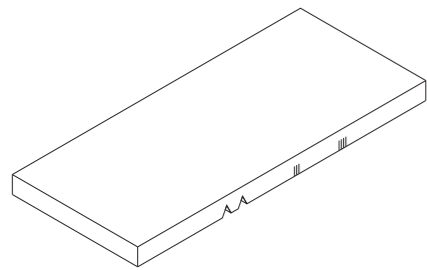


**Comparisons of pressure** have shown that the comfort mattress contributes to relieving pressure.

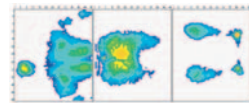
# universal mattress

The universal mattresses from wissner-bosserhoff are particularly suitable for relatively mobile residents who are not at risk of suffering from decubitus as they do not need to remain in bed all the time.

## 01 Universal mattress



Polyether foam RG 40, lower side with special recesses for knee-bend and DBfK (German Nursing Association) back rest.



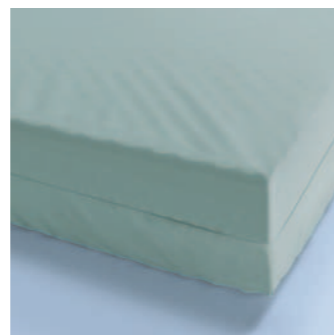
**Cover: Terry cloth**, zippered on two sides, colour beige.

Max. allowed weight of patient: 150 kg.  
Application areas: Standard care  
**Risk 0**



**Cover: Aqua**, waterproof with PU/PES-coating (155 g/m<sup>2</sup>), colour: white.

Max. allowed weight of patient: 15 kg.  
Application areas: Standard care  
**Risk 0**



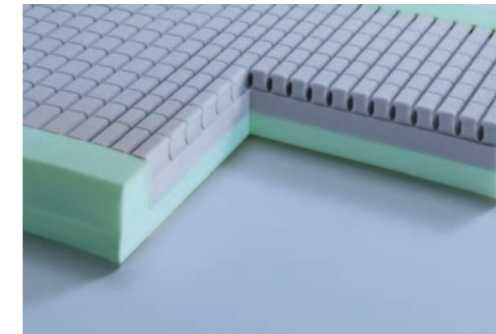
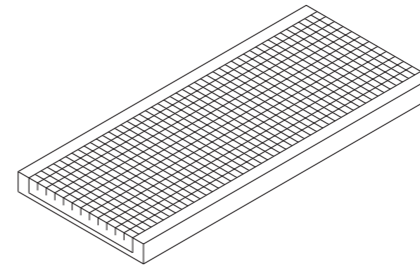
**Cover: Aqua Plus mint green**, i.e. waterproof with PU/PES-coating (190 g/m<sup>2</sup>), bi-elastic.

Max. allowed weight of patient: 150 kg.  
Application areas: Standard care  
**Risk I - II**

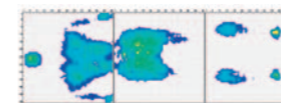
# comfort mattresses

It is important that not only the health aspects but also the comfort of the mattress are taken into consideration for people who are forced to spend longer periods in bed due to frailty or illness. The right choice of mattress means that the surface of the skin is pleasantly stimulated thus ensuring a positive sense of well-being.

## 02 CubiMatt



Cold foam mattress RG 40-45, with edge zone reinforcement, surface with ergonomically adapted special contour in a cubic system for improved point elasticity.

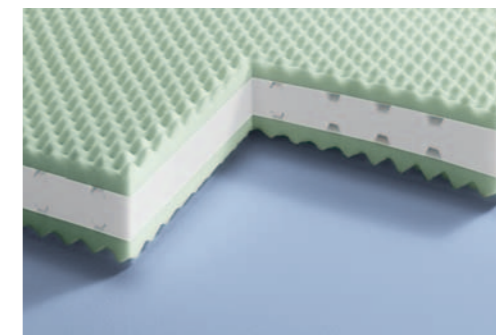
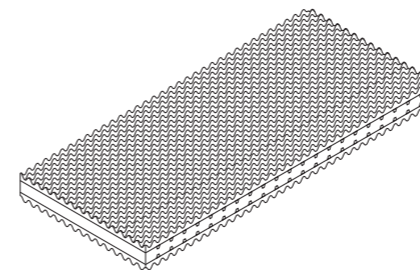


Max. allowed weight of patient: 120 kg.  
Application areas: Comfort and prevention  
**CPP 2,8**  
**Risk I**



**Cover: Liquid Wonder**, damp-repellant and with active breathing, with high-tech fibres and PUR membrane, corresponds to flame-resistance standard BS 7175, colour beige.

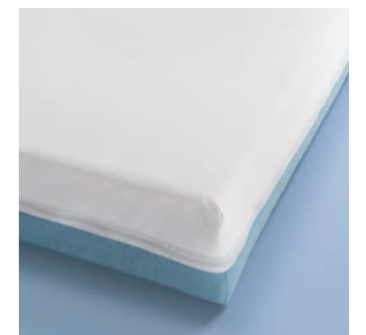
## 03 MicroMatt



3-layered cold foam mattress, RG 50/40/50 venting channels, surface with massage points.



Max. allowed weight of patient: 120 kg.  
Application areas: Comfort and prevention  
**CPP 2**  
**Risk I - II**

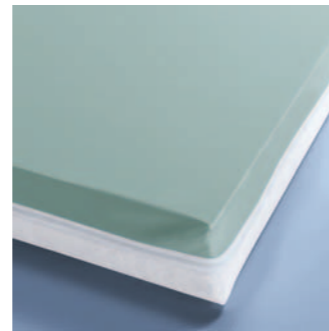
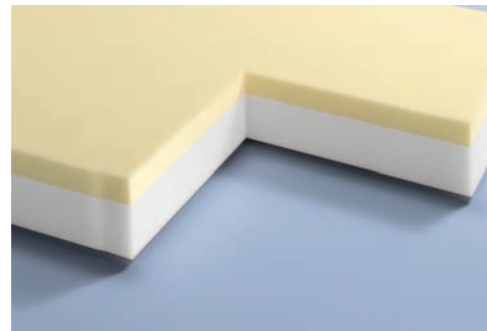
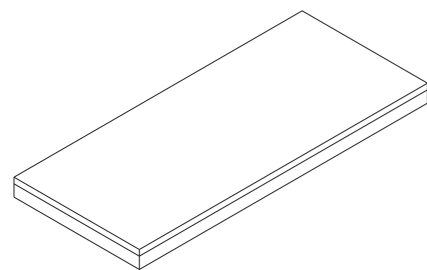


With reversible jersey cover: one half is Aqua Plus and one half jersey, i.e. elastic woven material made of hygienic hose fabric, light blue, highly breathable and suitable for boil washing (not waterproof).

# prophylaxis mattresses

Those people, who have a high risk of decubitus because they spend a long time in bed, will profit from reliable preventative measures. For this reason, the prophylaxis mattresses from wissner-bosserhoff provide optimum pressure distribution values for all body parts that are in contact with the mattress thereby significantly reducing the risk of decubitus.

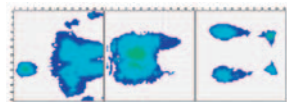
## 04 ViskoMatt



2-layered mattress, upper layer made of 4 cm viscoelastic thermo-foam, lower layer made of 8 cm cold foam RG 40.

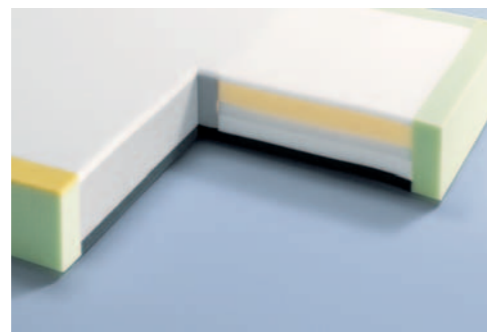
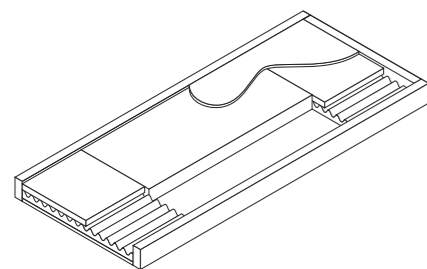
Max. allowed weight of patient: 150 kg.  
Application areas: Comfort and prevention

CPP 1,6  
Risk II



**Reversible cover Cambio:** one half is Aqua Plus and one half medical double cloth, i.e. made of a triple-layered material, white, highly breathable and suitable for boil washing (not waterproof), zippered on four sides.

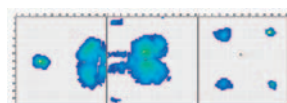
## 05 PropyMatt



Profi - Hybrid - mattress, with edge zone reinforcement, surface with viscose-elastic foam, head and heel area comprising a viscose and cold foam mix.

Max. allowed weight of patient: 130 kg.  
Application areas: Comfort and prevention

CPP 0,9  
Risk III-IV



**Cover Lintex,** dark blue, waterproof with PU/PES coat (185 g/m<sup>2</sup>), bi-elastic (upper side), with handle loops.

# posture aids

In addition to the right choice of mattress, the correct posture in bed will prevent any further complications and help the patient's convalescence; the risk of decubitus to those parts of the body lying freely or positioned on soft surfaces is reduced. The right positioning of posture aids helps to support the pelvis and relieve lumbar strain.

**01 Universal posture pillow 50-0144** For individual postures, e.g. for beneath the calves or for supporting the paralysed arm of a hemiplegia patient.

**02 Cylinder pillows 50-0145** For individual positioning of the patient, e.g. as a support beneath the knees or between the knees when the patient is lying on his side.

**03 Posture rolls for patients lying on their sides 50-0146** The roll supports the body when lying in a 30° side position; 30° hip and knee bed incorporated to facilitate easier positioning of the patient.

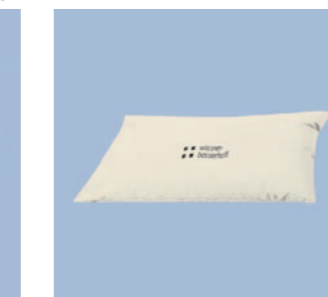
**04 Ring pillow 50-0147** This element securely supports the patient's head regardless of whether the patient is lying on his back or side.

**05 Half-moon pillow 50-0148** Can be used flexibly, e.g. behind the spine or behind the knees whilst also supporting the arms at the same time.

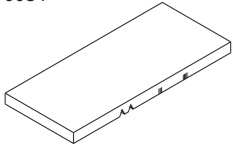
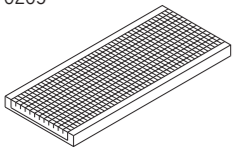
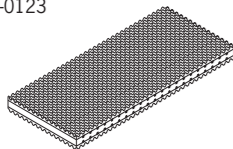
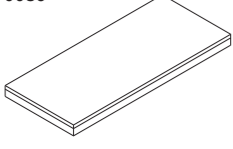
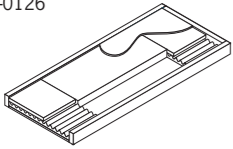
**06 Heel position 50-0149** For comfortable free positioning of the heels.

**07 Complete set (6 posture pillows + bag) 50-0150** One posture pillow of each of the above-mentioned types and a practical zippered storage bag.

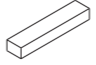
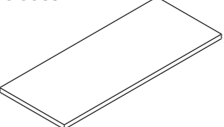
**08** The cotton cover is also recommended for people who perspire heavily or when there is direct contact with the skin (01-05).



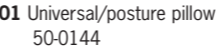

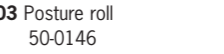

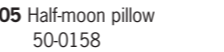

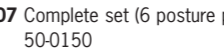
# product range/accessories

Mattresses	Area	CPP	Risk	Cover
<b>01</b> Universal mattress, terry cloth 50-0084 	Standard care max. allowed weight of patient: 150 kg		Risk 0	Terry cloth, stretch Aqua Aqua Plus Cambio Reversible jersey cover Liquid Wonder beige
<b>02</b> CubiMatt 50-0205 	Comfort and prevention max. allowed weight of patient: 120 kg	CPP 2,8	Risk I	Terry cloth, stretch Aqua Aqua Plus Cambio Reversible jersey cover Liquid Wonder beige
<b>03</b> MicroMatt 50-0123 	Comfort and prevention max. allowed weight of patient: 120 kg	CPP 2,0	Risk I - II	Terry cloth, stretch Aqua Aqua Plus Cambio Reversible jersey cover Liquid Wonder beige
<b>04</b> ViskoMatt 50-0085 	Preventing decubitus max. allowed weight of patient: 150 kg	CPP 1,6	Risk II	Terry cloth, stretch Aqua Aqua Plus Cambio Reversible jersey cover Liquid Wonder beige
<b>05</b> ProphyMatt II 50-0126 	Preventing decubitus max. allowed weight of patient: 130 kg	CPP 0,9	Risk III - IV	Lintex, with handle loops

## Accessories

<b>01</b> Extension cushion 50-0075 	<b>02</b> TheraSub Underlay for alternating pressure systems 50-0089 
---	--

## Posture aids

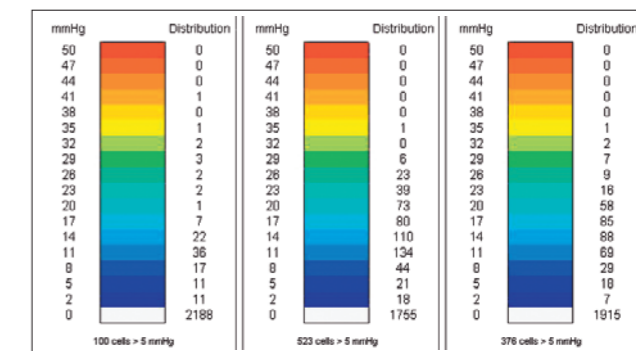
<b>01</b> Universal/posture pillow 50-0144 	<b>02</b> Cylinder pillows 50-0145 	<b>03</b> Posture roll 50-0146 	<b>04</b> Ring pillow 50-0146 
<b>05</b> Half-moon pillow 50-0158 	<b>06</b> Free positioning of heels 50-0149 	<b>07</b> Complete set (6 posture pillow + bag) 50-0150 	Terry cloth cover for Pos. 01-05

## Mattress covers

Cover	Aqua	Aqua Plus	Cambio	Jersey reversible cover	Lintex	Terry cloth-stretch	Liquid Wonder
<b>Mod.No.:</b>	50-0102	50-0096	50-0103	50-0140	50-0139	50-0101	50-0176
<b>Colour</b>	white	mint green	mint green/white	light blue/white	dark blue	beige	beige
<b>Damp protection</b>	yes	yes	on one half	on one half	yes	no	yes
<b>Area weight</b>	155 g/m <sup>2</sup>	190 g/m <sup>2</sup>	FS*-side 190 g/m <sup>2</sup>	FS*-side 155 g/m <sup>2</sup>	Upper side 185 g/m <sup>2</sup>	190 g/m <sup>2</sup>	190 g/m <sup>2</sup>
<b>Elasticity</b>	uni-elastic	bi-elastic	FS*-side bi-elastic	FS*-side uni-elastic	Upper side bi-elastic	elastic	elastic
<b>Washable at</b>	95°	95°	95°	95°	70°	95°	60°
<b>Zip</b>	2 sides	2 sides	4 sides	4 sides	4 sides	2 sides	2 sides
<b>Dimensions (cm)</b>	200 x 87 x 12	200 x 87 x 12	200 x 87 x 12	200 x 87 x 12	200 x 86 x 12	200 x 87 x 12	200 x 87 x 12
	208 x 87 x 12	208 x 87 x 12	208 x 87 x 12	208 x 87 x 12	208 x 86 x 12	200 x 87 x 12	200 x 87 x 12
	200 x 82 x 12	200 x 82 x 12	200 x 82 x 12	200 x 82 x 12	200 x 80 x 12	200 x 87 x 12	200 x 87 x 12

## CPP analysis

**CPP – the critical pressure points** – is the measure used to attest the suitability of an anti-decubitus mattress as a preventative or therapeutic measure for various decubitus risk groups. It determines the percentage of potentially hazardous decubitus pressure points on the surface of the mattress by calculating the number of all pressure points greater than 32 mmHg in relation to the total number of measured pressure points. The lower the CPP, the better the pressure distribution within the mattress and the higher the preventative or therapeutic suitability for decubitus patients.





# wissner- bosserhoff

Furniture for an ambience worth living in

wissner-bosserhoff GmbH  
Hauptstraße 4-6  
D-58739 Wickede (Ruhr)  
Telefon: +49 (0) 23 77 / 784-0  
Telefax: +49 (0) 23 77 / 784-163  
E-Mail: info@wi-bo.de

[www.wi-bo.de](http://www.wi-bo.de)

Made in Germany

